



FigBytes

# Water Footprints Explained

## Blue Water Footprint

water that has been sourced from **surface or groundwater resources**

and is evaporated or **incorporated into a product**

or taken from one body of water **and returned to another**



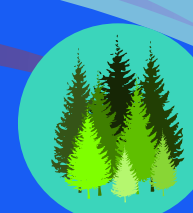
11% of the global water footprint of humanity from 1996-2005 was blue water usage

## Green Water Footprint

water from precipitation that is **stored in the root zone of the soil**

and is evaporated, transpired, **or incorporated by plants.**

Green water footprints makes up **the largest portion of water use**



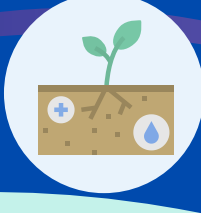
74% of the global water footprint of humanity from 1996-2005 was green water usage

## Grey Water Footprint

is the amount of **fresh water needed**

**to assimilate pollutants** to meet specific

**water quality standards**



15% of the global water footprint of humanity from 1996-2005 was grey water usage

**Does your organization need help taking control of your water footprint?**

The FigBytes Water Stewardship Solution tracks, measures, and manages water risks and impacts across your organization. FigBytes gives you full control to take the lead as a responsible water steward.

Sources:

- <https://waterfootprint.org/>
- <https://www.worldwaterday.org/>
- <https://waterfootprint.org/en/resources/interactive-tools/product-gallery/>
- <https://www.un.org/sustainabledevelopment/water-and-sanitation/>